

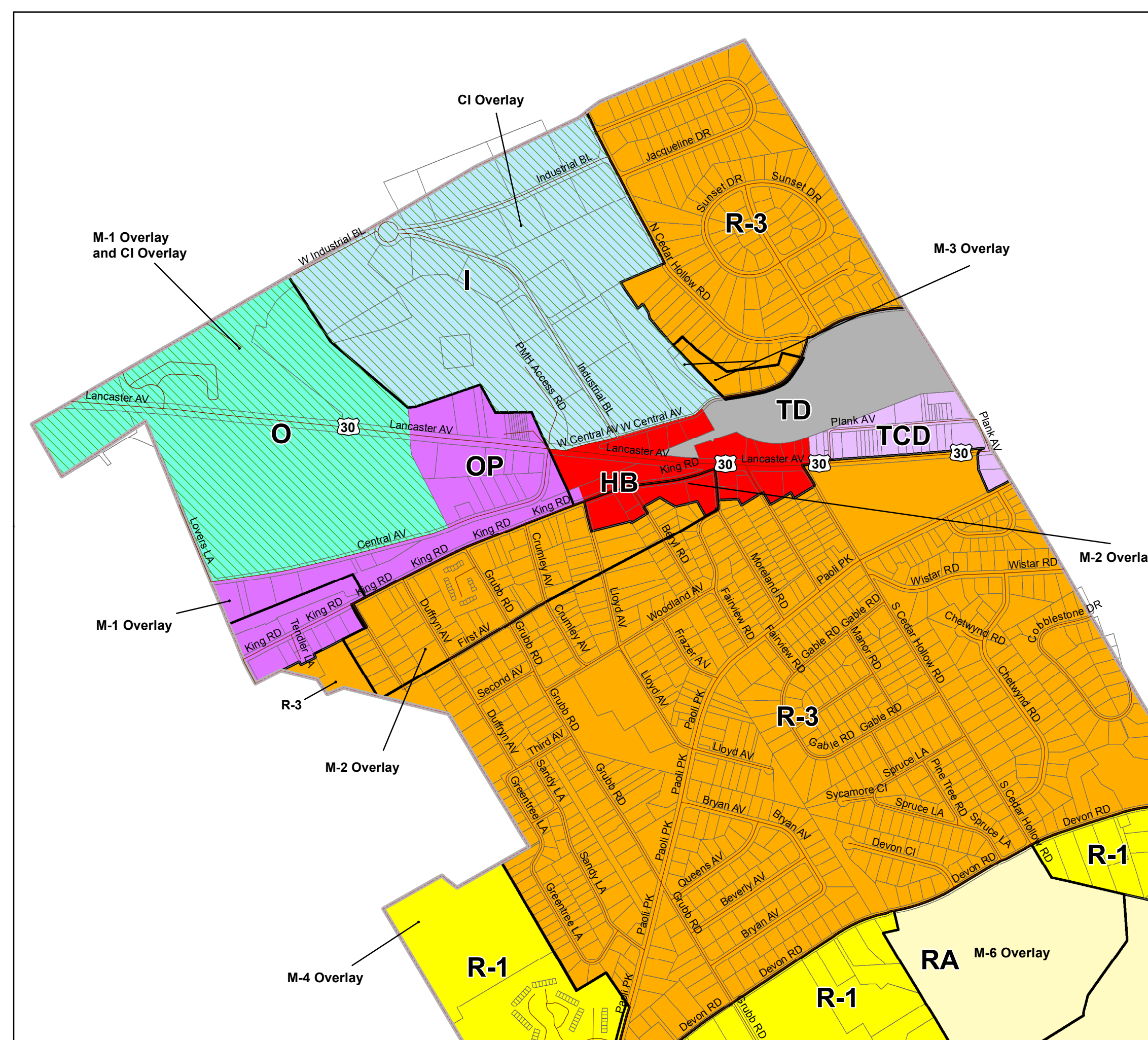
Willistown Township

Municipal Zoning Map

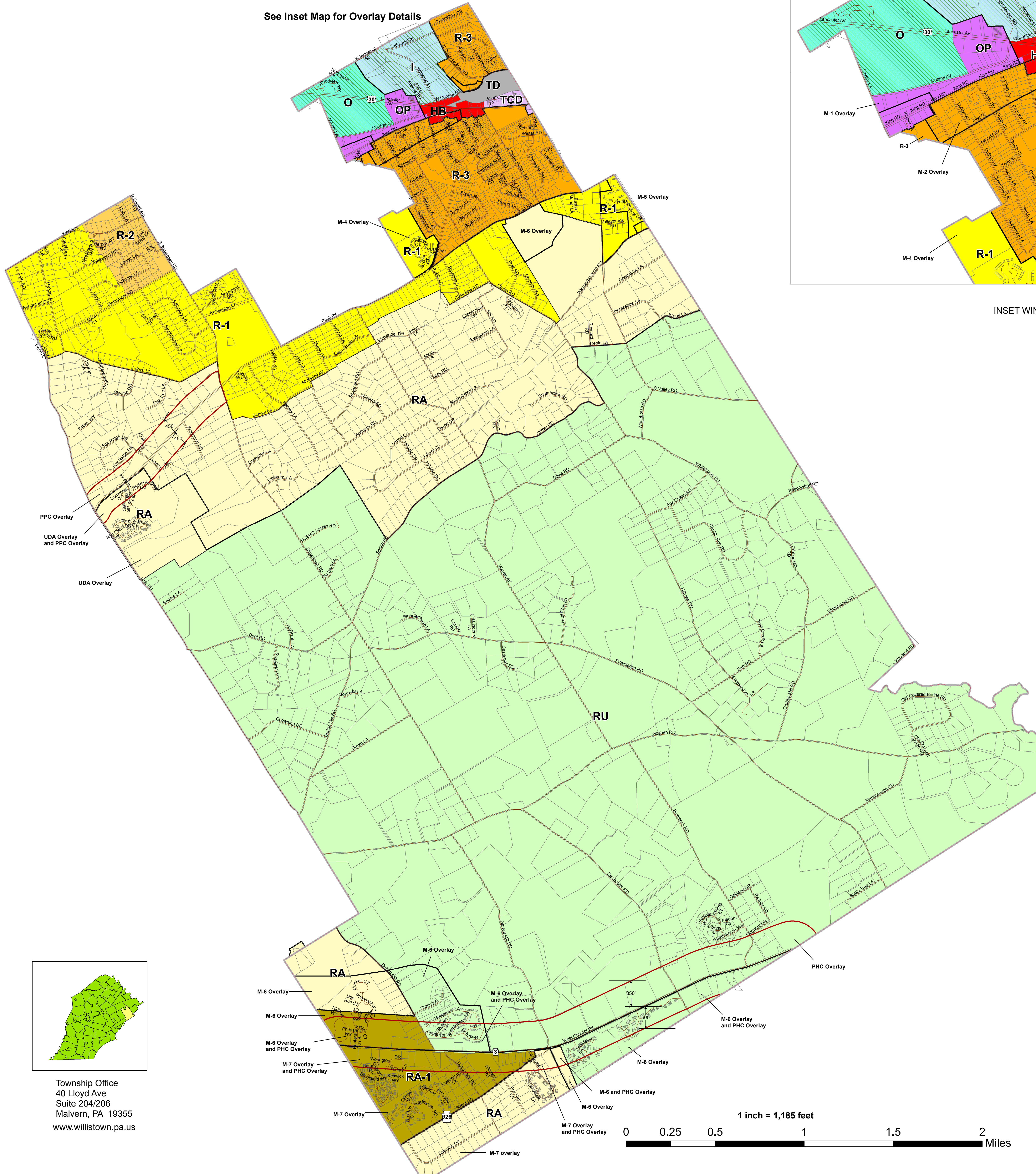
Zoning Adopted: January 24, 2011

Map Revised: August 24, 2015

See Inset Map for Overlay Details



INSET WINDOW



Legend

- Road Centerlines
- Parcels
- Municipal Boundary

Zoning Districts

- HB - Highway Business
- I - Restricted Industrial
- O - Office
- OP - Office-Professional
- R-1 - Residence
- R-2 - Residence
- R-3 - Residence
- RA - Residence
- RA-1 - Residence
- RU - Rural
- TCD - Town Center
- TD - Transportation

The Open Space Conservation District is an overlay upon all parcels of 15 acres or larger within any residential district. It is not shown on this map.

IMPORTANT NOTICE: The Official Zoning Map in the municipal building shall be the final authority regarding the current zoning status of land, buildings, and other structures.

NOTES: Not for engineering purposes.

Landbase Source: Planimetric features have been compiled to meet the National Map Accuracy Standard of 1:24,000 scale mapping using first order, fully analytical digital stereopairs, from aerial photography dated spring 2005, controlled analytically from ground points captured using first order GPS equipment. Planimetric coordinates were based on the PA State Plane Coordinate System: South Zone and North American Datum 1983.

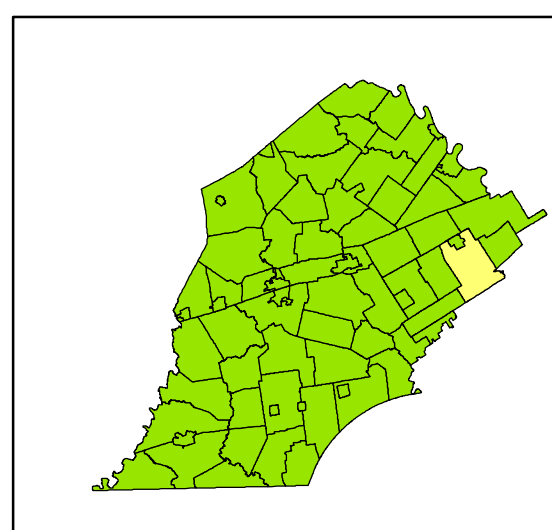
Copyright (c) 2009. County of Chester, PA. All Rights Reserved.

LIMITATION AND LIABILITY OF USE: This map was digitally compiled for internal maintenance and development use by the County of Chester, PA to provide index to parcels and for other reference purposes. Parcel lines do not represent actual field surveys of premises. County of Chester, PA makes no claims as to the completeness, accuracy or content of any data contained herein, and makes no representation of any kind, including, but not limited to, the warranties of merchantability or fitness for a particular use, nor are any such warranties to be implied or inferred, with respect to the information or data furnished herein.

No part of this document may be reproduced, stored in a retrieval system or transmitted in any form or by any means electronic, mechanical, photocopied, recorded or otherwise, except as expressly permitted by the County of Chester, PA.

AMENDMENTS

- 1947 - Creation of Map
- 1949 - Naming areas of the "Business District." Ordinance #2 adopted December 5th, 1949.
- 1955 - Reclassifying the "R-4" district, to the "R-3" district. Ordinance #7 adopted
- 1955 - Changing areas of the "R-3" district from the "R-2" district. Ordinance number unknown, adopted February 8th, 1955.
- 1955 - Changing areas of the "M" (Manufacturing) district. Ordinance #8 adopted April 26th, 1955.
- 1961 - Map and Zoning Ordinance re-amended and re-done. Adopted on April 25th, 1961.
- 1961 - Amended with reclassification of the Restricted Industrial District to include the portion of the Township bounded on the North by the Lincoln Highway and the East Whitesand Township line, on the East by Villa Maria Academy and on the South and West by the Borough of Malvern. No Ordinance Number was listed. Adopted on August 22nd, 1961.
- 1970 - Amended to designate the CA (Office-Apartment) district. Ordinance #6 of 1970 adopted August 25th, 1970.
- 1976 - Amended to delete the CA (Office-Apartment) district, add the O (Office) and A (Apartment) districts, and change the office professional district from "O" to "O-P." These areas are described in Exhibits "A" - "G" Ordinance #1 of 1976 adopted on May 11th, 1976.
- 1981 - Map and Zoning Ordinance re-amended and re-done. Ordinance #4 of 1981 adopted on October 13th, 1981.
- 1983 - Adding to the "O-P" Zoning District. Ordinance #4 of 1983 adopted April 12th, 1983.
- 1986 - Change of boundaries to the "O-P" Zoning District. Ordinance #6 of 1986 adopted July 8th, 1986.
- 1988 - Adding and removing areas of the "M" (Multi-Family) Zoning District. Ordinance #1 of 1988 adopted May 10th, 1988.
- 2003 - Creation of the Unified Development District. Ordinance #1 of 2003 adopted June 23rd, 2003.
- 2004 - Addition of parcels to the "M-3" (Multifamily) Overlay District. Ordinance #3 of 2004 adopted April 26th, 2004.
- 2007 - Reclassifying parcels from "T" (Restricted Industrial) to "TD" (Transportation); "OP" (Office Professional) to the "TCD" (Town Center District) and deleting the "M-3" Zoning Classification to various parcels. Ordinance #9 of 2007 adopted October 22nd, 2007.
- 2007 - Reclassifying a parcel to "RA" (Residential) and "M-6" (Multifamily). Ordinance #7 of 2007 adopted December 17th, 2007.
- 2011 - Creations of the "C-1" (Commercial-Industrial) Zoning Overlay District. Ordinance #2 of 2011 adopted January 24th, 2011.



Township Office
40 Lloyd Ave
Suite 204/206
Malvern, PA 19355
www.willistown.pa.us

